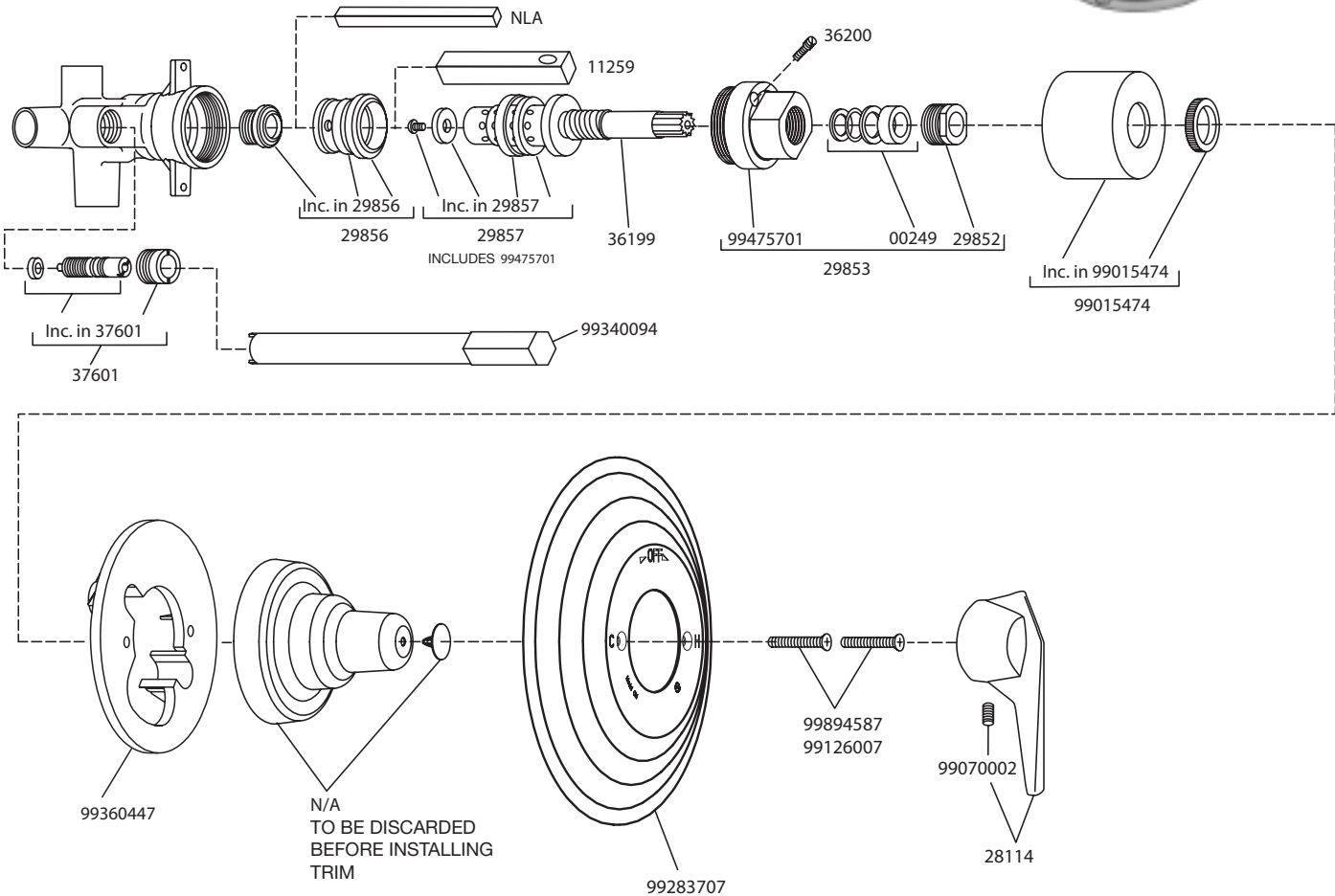


SYMMONS TEMPTROL  
C-96



BEST PLUMBING SPECIALTIES

Phone: (800) 448-6710 | [www.BestPlumbingSpecialties.com](http://www.BestPlumbingSpecialties.com)

INDIVIDUAL PARTS		COMPOSITE PARTS	
99894587	Escutcheon screws (2)	37601	Stop spindle assembly/escutcheon screw retainer
99126007	Escutcheon screws (vandal-resistant) (2)		
28114	Single blade lever handle		Stop plaster shield
99070002	Set screw	29856	Hot seat
Inc. in 29856	Hot renewable seat		Cold seat
Inc. in 29856	Cold seat O-ring		Cold seat O-ring
Inc. in 29856	Cold renewable seat	29857	Hot washer screw
Inc. in 29857	Hot washer screw		Hot washer
Inc. in 29857	Hot washer		Cold washer retainer
Inc. in 29857	Cold washer retainer		Cold washer
Inc. in 29857	Cold washer		Cap gasket
36199	Flow control spindle	36199	Spindle assembly
99475701	Cap gasket	99015474	Dome cover
29853	Cap assembly		Lock nut
00249	Packing, O-ring and washers		
29852	Packing nut		
Inc. in 99015474	Dome cover		
Inc. in 99015474	Lock nut		
36200	Limit stop with O-ring		
NLA	Hot seat removal tool		
11259	Cold seat removal tool		
Inc. in 37601	Stop spindle assembly/escutcheon screw retainer		
Inc. in 37601	Stop plaster shield		
99340094	Stop plaster shield removal tool		
99283707	Escutcheon		
99360447	Wall mounting flange		
N/A	Plaster shield with clip		

TROUBLE SHOOTING CHART

Problem	Cause	Solution (Follow service instructions)
Valve will not pass water.	Hot and cold water not turned on.	Turn on both supplies. Valve will not operate unless both HOT and COLD water pressure is turned on.
Valve leaks when shut off.	Hot and cold washers are worn, or foreign matter (solder, chips, etc.) are between washers and seat surfaces	Replace Hot and Cold washers, inspect top surface on hot and cold seats and replace if necessary.
Temperature control handle is turned from cold to hot (or hot back to cold) and volume from spout or head is not constant.	Pressure balancing piston housed in spindle assembly is blocked from free movement by foreign matter.	With valve open half way, remove handle and tap spindle with plastic hammer. If problem not solved, remove spindle assembly completely and tap handle against solid object to free piston. Soaking in household vinegar will help free foreign matter.
Valve delivers sufficient quantity of cold, but little hot, or the reverse of this.	Same as above	Same as above
Temperature varies without moving handle.	Same as above	Same as above
Valve delivery temperature reduces gradually during use; must be turned on to hotter positions to maintain constant temperature.	Overdraw on hot water supply, i.e., running out of hot water.	Reduce maximum flow by using volume control adjustment on valve or shower head. This will allow longer period of use before overdrawing hot water supply.
Valve delivers hot water when initially opened and water turns colder when the handle is rotated in a counter-clockwise direction.	Valve is piped incorrectly, i.e., the hot supply is piped to the cold inlet to the valve and the cold supply is piped to the hot inlet of the valve.	If piping is accessible, correct piping connections to the valve. If piping is not accessible, contact factory to order a reverse seat and tool (T-108 KIT). Older installations may require replacement of the hot seat (T-1) as well
In tub/shower valves, when diverter is set in shower position a trickle of water runs from tub spout.	A design function of this valve is to allow a trickle of water from the tub spout when diverter is set for shower position. This trickle of water is necessary to ensure safe operation in that the valve will be shut off at main handle and NOT with diverter handle.	